

SUPPLEMENTAL INFORMATION

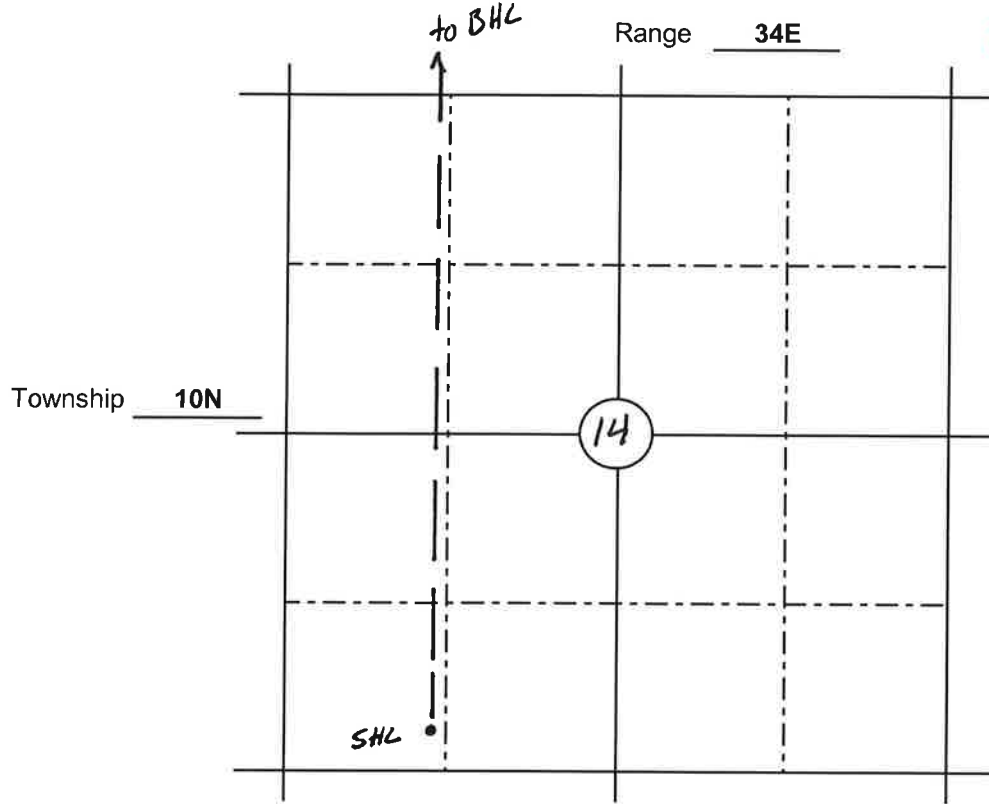
RECEIVED

NOTE: Additional information or attachments may be required by Rule or by special request.

OCT 25 2019

Plot the location of the well or site that is the subject of this notice or report.

**MONTANA BOARD OF OIL &
GAS CONSERVATION • BILLINGS**



BOARD USE ONLY

CONDITIONS OF APPROVAL

The operator must comply with the following condition(s) of approval:

Failure to comply with the conditions of approval may void this permit.

MONTANA BOARD OF OIL AND GAS ATTACHMENT TO FORM 2 “CONDITIONS OF APPROVAL”

A. Field Inspector must be notified at least **24 hours** in advance of the start of fracture stimulation operation.

B. 36.22.1106 SAFETY AND WELL CONTROL REQUIREMENTS – HYDRAULIC FRACTURING

(1) New and existing wells which will be stimulated by hydraulic fracturing must demonstrate suitable and safe mechanical configuration for the stimulation treatment proposed.

(2) Prior to initiation of fracture stimulation, the operator must evaluate the well. If the operator proposes hydraulic fracturing through production casing or through intermediate casing, **the casing must be tested to the maximum anticipated treating pressure**. If the casing fails the pressure test it must be repaired or the operator must use a temporary casing string (fracturing string).

(a) **If the operator proposes hydraulic fracturing through a fracturing string, it must be stung into a liner or run on a packer set not less than 100 feet below the cement top of the production or intermediate casing and must be tested to not less than maximum anticipated treating pressure minus the annulus pressure applied between the fracturing string and the production or immediate casing.**

(3) A casing pressure test will be considered successful if the pressure applied has been held for 30 minutes with no more than ten percent pressure loss.

(4) A **pressure relief valve(s)** must be installed on the treating lines between pumps and wellhead to limit the line pressure to the test pressure determined above; the well **must be equipped with a remotely controlled shut-in device** unless waived by the board administrator should the factual situation warrant.

(5) **The surface casing valve must remain open** while hydraulic fracturing operations are in progress; the annular space between the fracturing string and the intermediate or production casing must be monitored and may be pressurized to a pressure not to exceed the pressure rating of the lowest rated component that would be exposed to pressure should the fracturing string fail.

History: 82-11-111, MCA; IMP, 82-11-111, MCA; NEW, 2011 MAR p. 1686, Eff. 8/26/11.